

# wall fitting and assembly instructions

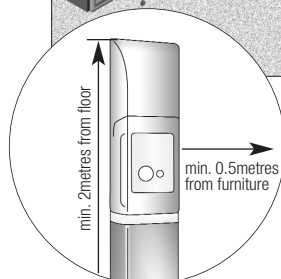
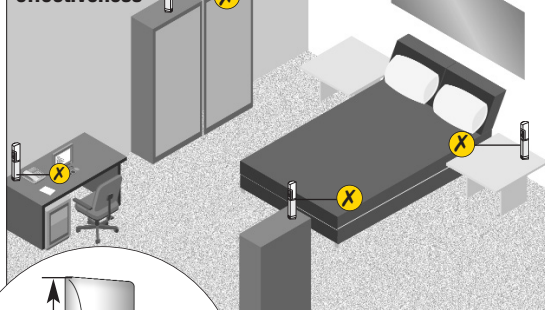
# cleanaer<sup>®</sup>

Cleanaer should be used in accordance with these wall fitting and assembly instructions only

## Placement of cleanaer

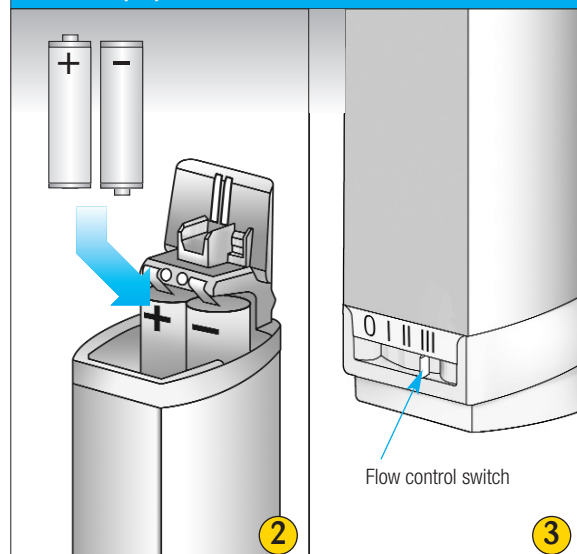


### Locations for maximum effectiveness



- Place on a wall in an open area with good air circulation for optimal efficiency
- 2 metres from floor level
- In bracket on the wall
- Half a metre from furniture

## Console preparation



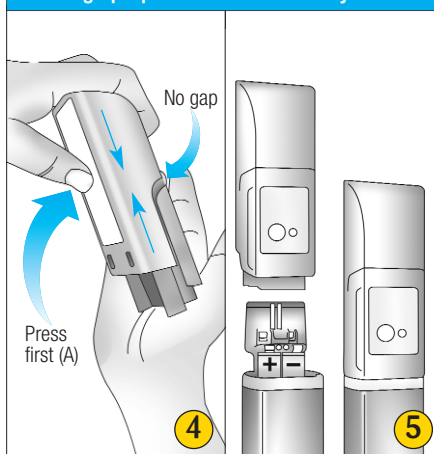
**1. Fix wall bracket onto wall.**  
Use two screws & rawplugs supplied. Attach wall bracket at least 2m above floor level. Place in an area with good air circulation for optimal efficiency.

**2. Insert batteries.**  
Insert the batteries into the console unit as shown. Use only the AA alkaline batteries provided. Do not recharge these batteries.

**3. Switch to correct position.**  
Turn the switch on. Position on setting III for optimal effect.

Please keep for future reference

## Cartridge preparation and assembly



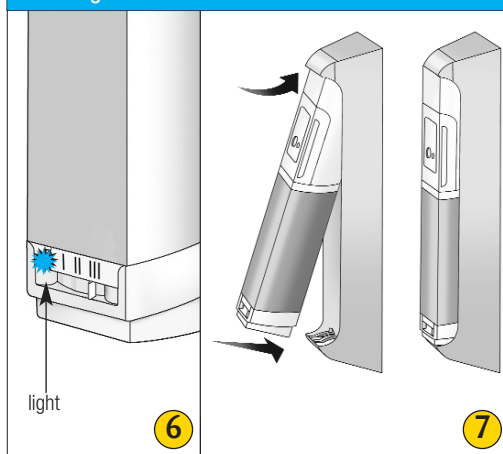
### 4. Activate cartridge.

STEP 1 Press button (A) on the back of the cartridge.  
STEP 2 While holding in (A) push together to activate, until there is NO GAP. Keep the cartridge upright at all times after activation.

### 5. Attach cartridge.

Place activated cartridge on top of console unit. Keep cartridge upright at all times.

## Inserting unit into wall bracket



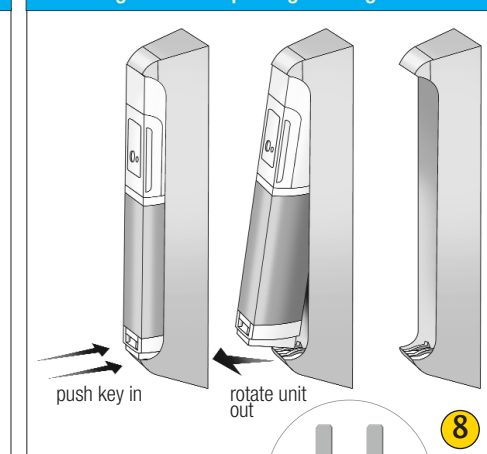
### 6. Check cleanaer is working

The light will flash to show cleanaer is working. It will flash for 2 minutes continuously. It will then begin the dose cycle and only flash when releasing cleaning droplets.

### 7. Fitting cleanaer into the wall bracket.

Push the top of cleanaer into the bracket and rotate down until it clips into the base. Cleanaer should be held firmly in the bracket.

## Servicing unit and replacing cartridge



### 8. Servicing cleanaer

Use your key to release cleanaer. Push key into holes until the clips release cleanaer. Rotate the bottom of cleanaer out of the bracket. Remove entire cleanaer from the wall bracket. Remove cartridge and both batteries. Put empty cartridge and batteries aside for proper disposal.

REPEAT STEPS 2 TO 7 WITH NEW CARTRIDGE AND BATTERIES.